



TRASH
MOUNTAIN
PROJECT

1001 14th St. San Francisco, CA 94103

2023 ANNUAL REPORT





Why we exist

The Problem

We exist because human beings live, work and die in trash dump communities, and we feel commanded to help them and show them Christ. They live in despair in every way imaginable.

What is a trash dump community?

A trash dump community is one where people set up a community within or adjacent to an open trash dump. They build their homes from trash. They make a living by picking through the trash for food and recyclables. Most of them are multi-generational. They lack access to education, proper nutrition, health care, livelihood, safe housing and discipleship.

How bad is it?

- Over 15 million people live in trash dump communities, and that number has risen every year since 2017.
- They face daily violence, exposure to disease and elements, mental illness, injury and trauma.

The background image shows a large trash dump under a grey sky. A blue truck is dumping waste on the left. In the foreground, the lower legs and feet of several people are visible, standing on the ground amidst the trash. The text 'Who We Are' is written vertically on the left side of the image.

Who We Are

The Vision

Hope and Opportunity for all people living in trash dump communities

That means access to opportunities such as education, nutrition, health care, and livelihood and exposure to the real source of hope, Jesus Christ

How do we do this?

Mission Statement: Trash Mountain Project exists to develop Christ-centered environments for children and families living in trash dump communities worldwide.

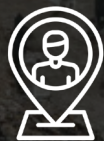
We create an environment through our international partners where the people are given opportunities they would never know and are shown the love of Christ lived out amongst them.

What Makes Us Different?



Where We Work

We work in trash dump communities where the people are destitute and violence is rampant.



Local Partners

We use indigenous leaders in order to bypass 10-15 years of cultural acclimation and trust building. The leaders we partner with are already trusted and doing something about the problem.

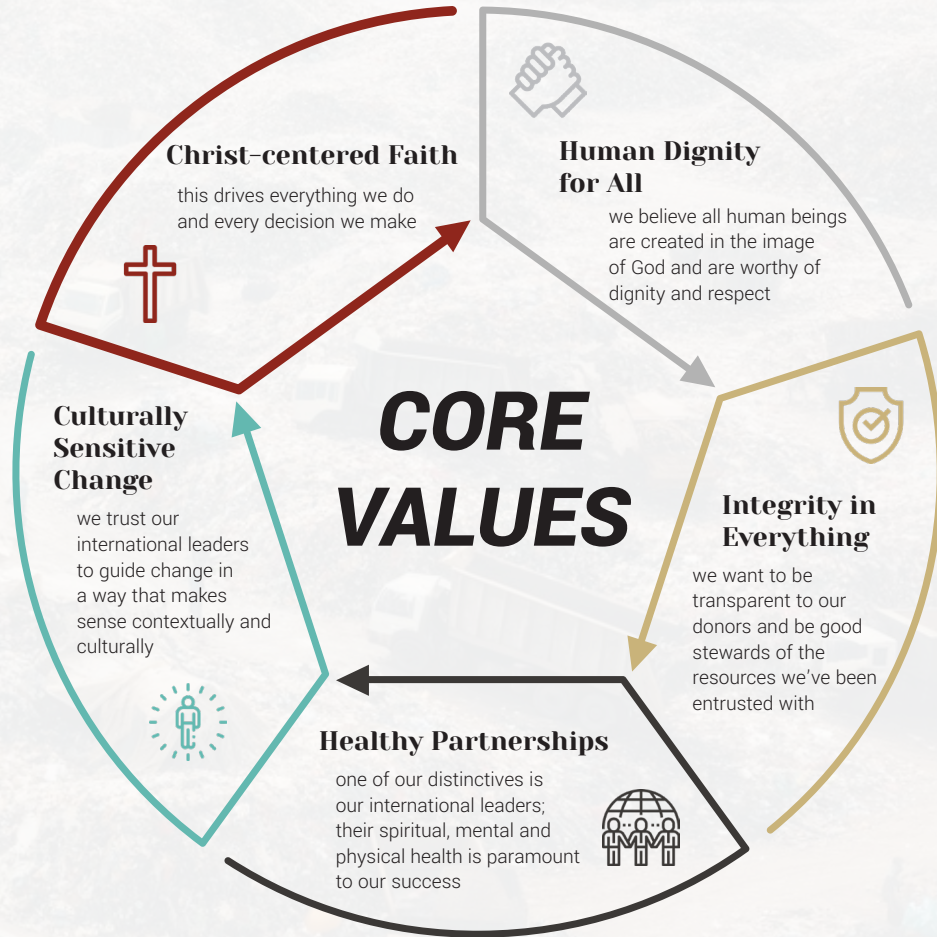


Who We Help

The people in these communities are so far below the poverty line that most organizations don't want to help due to the difficulty in showing success.

Did you know?

The average life expectancy in a trash dump community is 35 years old, and 30% of infants die in early childhood (UNESCO)



International Partnerships



HONDURAS

ROHI Project
One Community

DOMINICAN REPUBLIC

Niños con una Esperanza
(Kids With a Hope)
One Community

PHILIPPINES

TMP Philippines
Five Communities

KENYA

Dandora Dumpsite
Rehabilitation Group
(DADREG)
One Community

INDONESIA

Sensitive area due
to persecution
Six Communities

Our Approach

1

RESEARCH

We need to know the community, the culture, and the country so that we are culturally sensitive and more effective

3

PLANNING

Work with our partners to identify root causes of the problem in their context along with which lines of effort will be most effective

5

INDEPENDENCE

Ongoing process of planning for eventual personal and/or community independence

PROBLEM

Cycle of Despair

Caused by living and working in trash dump communities

2

RELATIONSHIP

Find and develop relationships with local leaders (our partners)

4

EXECUTION

Develop resources and implement strategy

DESIRED END STATE

Cycle of Hope

Caused by access to opportunity and exposure to true hope



*ROHI Project staff and students
in Tegucigalpa, Honduras*

STAFF

Brett Durbin

Executive Director

Marianne Baumchen

Director of Accounting and HR

Shelley Setchell

Regional Director, Latin America

Dr. Dave Henry

Director of Discipleship and
Strategic Development

Carol Mammoliti

Donor Relations

BOARD OF DIRECTORS

Mike Tindell • Chair

Coal Creek Construction – President

Jaelle Durbin • Secretary

Trash Mountain Project – Co-founder

Cindy Wilson • Treasurer

Liberty Utilities – Director, Rates & Regulatory Affairs

Dr. Michael Browning, DDS • Director

Sunflower Smiles Pediatric Dentistry – Owner and
Pediatric Dentist

Brett Durbin • Director

Trash Mountain Project – Co-founder and Executive
Director

Tim Wilson • Director

Lighthouse Bible Church – Pastor



Financials



Consolidated Statement

	Fiscal Year 2022	Fiscal Year 2021
	06/01/22 - 05/31/23	06/01/21 - 05/31/22
Consolidated Statement		
Income		
Ordinary Income		
Stock	10,767	31,443
Income	1,154,873	1,261,642
Total	1,165,640	1,293,085
Other Income		
Non Cash Contributions	71	-
Miscellaneous Income	-	-
PPP Forgiveness Income	-	86,340
Income from Merch Sales	-	-
Gain/Loss on Assets	-	222
Security Sale Proceeds	(87)	(4,107)
Interest Income, Dividends	961	619
Total	946	83,074
Expense		
Ordinary Expense		
Development/Fundraising	108,316	149,860
Program Services	964,265	1,091,254
Management & General	218,995	270,414
Total	1,291,576	1,511,528
Other Expense		
COGS & Sales Tax Remitted	-	548
Basis in Securities Sold	-	-
Total	-	548
Assets		
Current Assets	146,020	268,716
Fixed Assets	90,713	101,320
Total	236,733	370,036
Liabilities & Equity		
Current Liabilities	5,062	13,375
Long Term Liabilities (PPP Loan)	-	-
Total Equity	231,671	356,661
Total	236,733	370,036
Net		
Net Ordinary Income	(125,936)	(218,443)
Net Other Income	946	82,526
Net Income by Fiscal Year	(124,991)	(135,917)
Balance Forward	356,661	492,580
Balance Year End	231,671	356,661

We take stewardship and financial transparency very seriously at TMP. Every year, we undergo an independent audit to give donors confidence and to hold us accountable.

Audit report can be found at trashmountain.com



Cummins,
Coffman &
Schmidlein
Certified Public Accountants, P.A.



Our Promise To You

100% Model

Trash Mountain Project

◆ ◆ ◆

We **do not** take one cent from your **program designation donation** for administrative fees

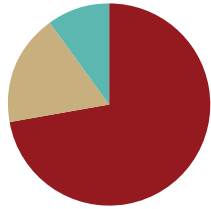
100% goes to the program of your choice

We are **100% debt free**

Income and Expenses

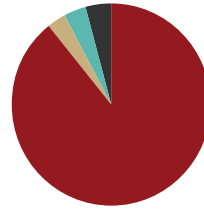
Amount Raised \$1,165,640

Amount Invested \$1,291,576



Allocation of Expenses

- 75% • Programs
- 17% • Management & General
- 8% • Development



615 Total Donors

- 545 Individuals
- 28 Corporations
- 20 Foundations
- 22 Churches



In 2015 the ECFA (Evangelical Council for Financial Accountability) announced the accreditation of Trash Mountain Project. Our continuing accreditation with the ECFA is just one more step in the process of following God's leading with the resources He has entrusted to this important mission.

The Platinum Seal of Transparency indicates that we share clear and important information with the public about our goals, strategies, capabilities, achievements and progress indicators that highlight the difference we are making in the world.

ALL NUMBERS ARE FISCAL YEAR ENDED MAY 2023



Direct Aid

Budget for 2023

Honduras	\$162,000
Dominican Republic	\$210,937
Philippines	\$138,398
Indonesia	\$40,548
Kenya	\$22,600
Total	\$574,483

ALL NUMBERS ARE FOR THE 2023 CALENDAR YEAR



How you can help

Over the last two years, economic conditions have significantly affected lives both locally and internationally, with a sharp increase in the cost of living while incomes have remained largely unchanged. This has resulted in necessary changes for many of you. We have felt it too. These factors have resulted in a significant decline in income for TMP while costs have increased dramatically.

Meanwhile, the problem we face in trash dump communities continues to worsen.

Thankfully, we have dedicated partners that are performing at the highest level we've ever seen. We are now reaching 1,715 kids every single day! We celebrate this and thank God for allowing us to be a part of it. However, the growing need leaves us with nearly 2,000 kids on waiting lists to get into our programs.

It's heartbreaking but we simply cannot do anything about it right now.

Help us to continue serving the 1,715 children



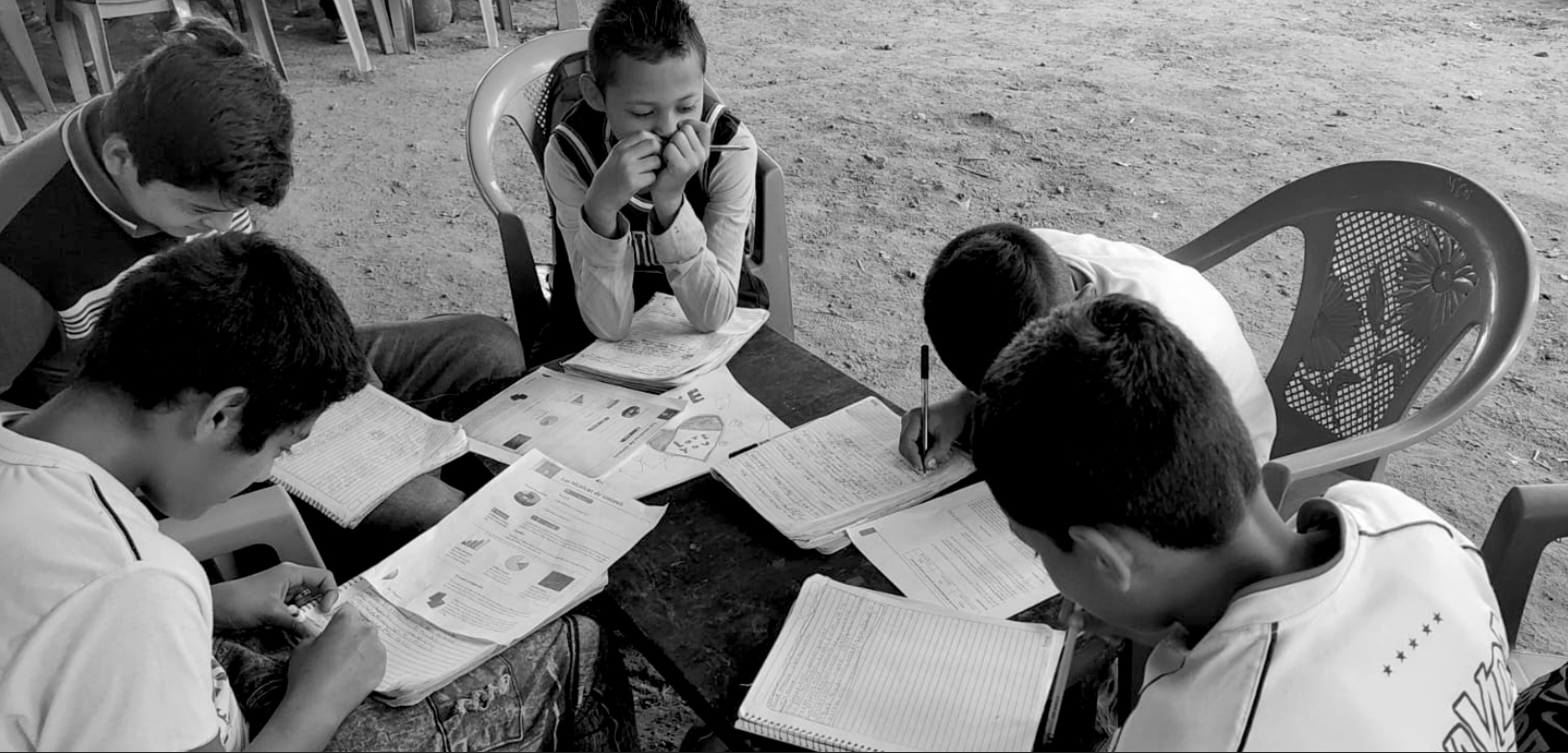
Online Giving OR Mail a Check

trashmountain.com

4110 NW 62nd St., Ste B, Topeka, KS 66618

785-246-6845

We need to raise \$373,000 before December 31st



4110 NW 62nd St. Ste B • Topeka, KS 66618 • 785-246-6845 • info@trashmountain.com

We are a 501(c)(3) non-profit organization. All contributions to Trash Mountain Project, Inc. are tax deductible under section 170 of the Internal Revenue Code. Trash Mountain Project, Inc. EIN# 26-4775012



**TRASH
MOUNTAIN
PROJECT**

live the command