



ANNUAL REPORT 2021



TRASH
MOUNTAIN
PROJECT

live the command

Why we exist

THE PROBLEM

We exist because human beings live, work and die in trash dump communities, and we feel commanded to help them and show them Christ. They live in despair in every way imaginable.

What is a trash dump community?

A trash dump community is one where people set up a community within or adjacent to an open trash dump. They build their homes from trash. They make a living by picking through the trash for food and recyclables. Most of them are multi-generational. They lack access to education, proper nutrition, health care, livelihood, safe housing and discipleship.

How bad is it?

- Over 15 million people live in trash dump communities, and that number has risen every year since 2017
- The average life expectancy is 35 years old, and 30% of infants die in early childhood (UNESCO)
- They face daily violence, exposure to disease and elements, mental illness, injury and trauma



Who We Are

The Vision

Hope and opportunity for all people living in trash dump communities

- That means access to opportunities such as education, nutrition, health care, and livelihood and exposure to the real source of hope, Jesus Christ

How do we do this?

Mission Statement: Trash Mountain Project exists to develop Christ-centered environments for children and families living in trash dump communities worldwide.

- We create an environment through our international partners where the people are given opportunities they would never know and are shown the love of Christ lived out amongst them.

What Makes Us Different?



Local Partners

We use indigenous leaders in order to bypass 10-15 years of cultural acclimation and trust building. The leaders we partner with are already trusted and doing something about the problem.



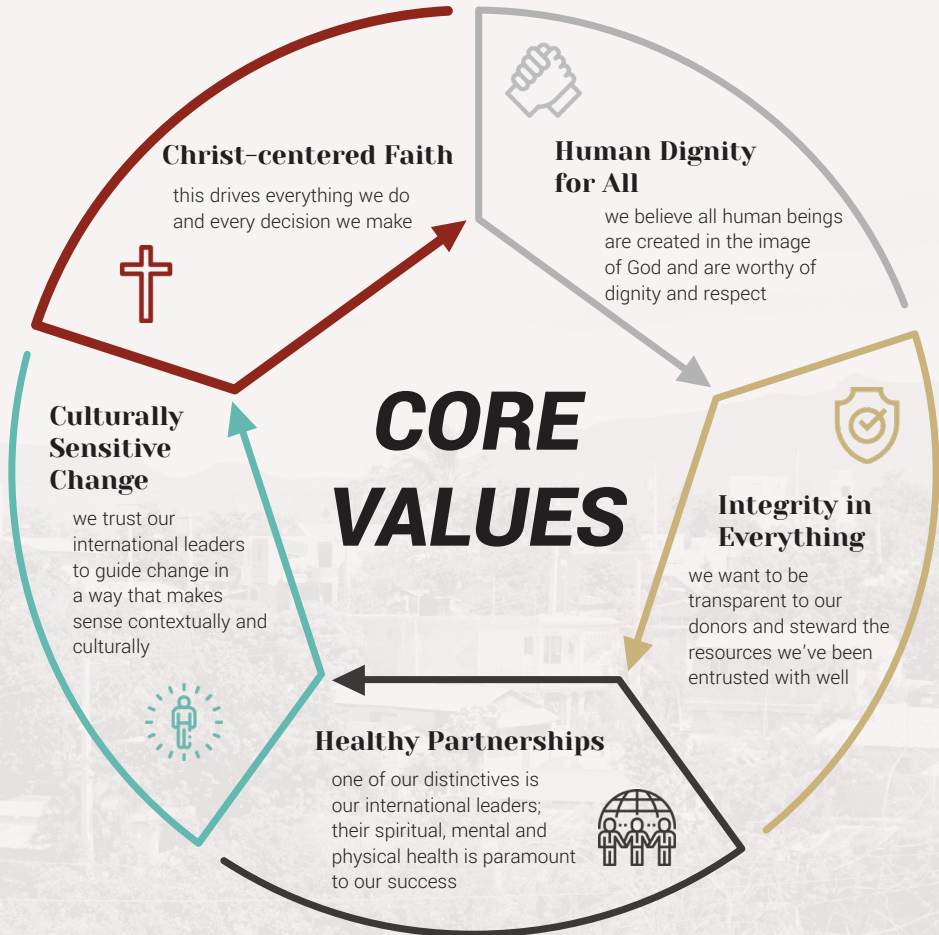
Where We Work

We are one of the only organizations focused on working in trash. We work in trash dump communities where the people are destitute and violence is rampant.



Who We Help

The people in these communities are so far below the poverty line that most organizations don't want to help due to the difficulty in showing success.



A MESSAGE FROM THE DIRECTOR



Brett Durbin

Executive Director

2021 has been another year of challenge for our international partners. The pandemic continues to wreak havoc in developing nations, but our partners have been resilient and determined to continue in the mission God called us to. Despite the hurdles, we have made significant progress in every country we operate in.

In Kenya, we're in the process of building a women's home on our partner's grounds which will give safe and sanitary housing to over 30% of the single mothers and their children currently living in the Dandora trash dump. We're also expanding the primary school from 2nd to 8th grade which will provide ongoing education to over 300 more children.

In Indonesia, our partner expanded to two new communities and added 28% capacity. We also had the very first college graduate from one of the communities there, and three more are currently enrolled.

In the Philippines, we've started a beta test for a metrics system which will tell us where we are successful and not. We plan to expand this to all locations in 2022.

In Honduras, AFE is back up and running and is thriving financially for the first time in years.

In the Dominican Republic, we completed construction of the dining room and kitchen which will vastly improve the quality of life of the workers and expand the capacity to help the community. The roof will also serve as the floor of the next step there: a nursery.

As you can see, TMP has been busy this year, and we owe it all to our partners' resilience and our donors' dedication to seeing this organization through a difficult time globally. We want to say thank you for supporting this mission that God has called us to.

Our Programs



RESILIENCY

Mike is one example amongst many where our partners overseas adapted and overcame seemingly insurmountable obstacles to ensure the people we serve were not forgotten during this difficult time. In the Philippines, the government restrictions have been severe. Movement is heavily restricted. Food security quickly became a challenge. The people living in the dump communities there couldn't get to the market many times, and when they did, food was scarce. Multiple times in the past two years, we had to reallocate funds and find new resources to make sure food and medical supplies made it to those in need. During the last government quarantine it became harder. The only people allowed to move about freely were health care workers and food delivery drivers.

So, Mike, one of the staff members at TMP-Philippines, went and applied for a job as a food delivery driver. Now, when he has a delivery he can move through the checkpoints freely. He delivers the orders he is tasked with but also takes along the deliveries that need to make it to the communities ensuring they get food and medical supplies. He even started taking food to the guards at the checkpoints to build rapport. This single effort has changed how we're able to serve people in the Philippines during government quarantines that are still ongoing. Mike is amazing, but there are many like him in all five countries we work in.





HONDURAS

Amor Fe Y Esperanza (AFE)
One Community

DOMINICAN REPUBLIC

Niños con una Esperanza
(Kids With a Hope)
One Community

PHILIPPINES

TMP Philippines
Five Communities

KENYA

Dandora Dumpsite
Rehabilitation Group
(DADREG)
One Community

INDONESIA

Sensitive area due
to persecution
Five Communities

Our Approach

PROBLEM

Cycle of Despair

caused by living
and working
in trash dump
communities

1

RESEARCH

we need to know
the community,
the culture, and
the country so that
we are culturally
sensitive and more
effective

2

RELATIONSHIP

Find and develop
relationships with
local leaders (our
partners)

3

PLANNING

Work with our
partners to identify
root causes of the
problem in their
context along with
which lines of
effort will be most
effective

4

EXECUTION

Develop resources and implement the lines of effort in the community with our international partners leading the way

5

INDEPENDENCE

Ongoing process of planning for eventual personal and/or community independence

DESIRED END STATE

Cycle of Hope

caused by access to opportunity and exposure to true hope



This is a long-term approach, as it takes years to see effective change in a community.

We are committed to staying the course.



Operations

STAFF

Brett Durbin

Executive Director

Clayton Jones

Director of Operations

Marianne Baumchen

Director of Accounting and HR

Shelley Setchell

Regional Director, Latin America

Dr. Dave Henry

Discipleship Director

Carol Mammoliti

Donor Relations

BOARD OF DIRECTORS

Ken Vander Hart • Chairman

Harvest Financial Group – Co-founder and President

Mark Ruelle • Secretary

Evergy – Chairman of the Board of Directors

Cindy Wilson • Treasurer

Evergy – Director, Project Management Office

Dr. Michael Browning, DDS • Director

Sunflower Smiles Pediatric Dentistry – Owner and Pediatric Dentist

Brett Durbin • Director

Trash Mountain Project – Co-founder and Executive Director

Jaelle Durbin • Director

Trash Mountain Project – Co-founder

Clayton Jones • Director

Trash Mountain Project – Director of Operations

Mike Tindell • Director

Coal Creek Construction – President

Tim Wilson • Director

Lighthouse Bible Church – Pastor

Financials



Consolidated Statement

	Fiscal Year 2020 06/01/20 - 05/31/21	Fiscal Year 2019 06/01/19 - 05/31/20
Consolidated Statement		
Income		
Ordinary Income		
Stock	38,280	899
Income	1,429,528	1,568,167
Total	1,467,808	1,569,066
Other Income		
Non Cash Contributions	-	5,840
Miscellaneous Income	5,600	-
PPP Forgiveness Income	55,300	-
Income from Merch Sales	18	183
Gain/Loss on Assets	175	(28)
Security Sale Proceeds	1,845	-
Interest Income, Dividends	983	1,439
Total	63,921	7,434
Expense		
Ordinary Expense		
Development/Fundraising	116,442	140,912
Program Services	1,050,741	1,221,092
Management & General	239,202	239,433
Total	1,406,385	1,601,437
Other Expense		
COGS & Sales Tax Remitted	-	-
Basis in Securities Sold	-	-
Total	0.00	0.00
Assets		
Current Assets	489,875	338,590
Fixed Assets	97,692	105,372
Total	587,567	443,962
Liabilities & Equity		
Current Liabilities	23,748	28,452
Long Term Liabilities (PPP Loan)	71,240	48,275
Total Liabilities & Equity	492,579	367,235
Total	587,567	443,962
Net		
Net Ordinary Income	61,423	(32,371)
Net Other Income	63,921	7,434
Net Income by Fiscal Year	125,344	(24,937)
Balance Forward	367,235	392,172
Balance Year End	492,579	367,235

The numbers provided for Fiscal Year 2020 were audited Fall 2021

We take stewardship and financial transparency very seriously at TMP. Every year, we undergo an independent audit to give donors confidence and to hold us accountable.

For Fiscal Year 2020, we passed our independent audit with zero incident, and the audit report can be found at trashmountain.com



Cummins,
Coffman &
Schmidlein
Certified Public Accountants, P.A.



We **do not** take one cent from your **designated** donation for administrative fees

100% goes to the program of your choice

We are 100% **debt free**

Basecamp

This is how we are able to do the 100% model. Basecamp covers all of our administrative costs including salaries.

105

donors that gave to Basecamp last year

Recurring Givers

This is what allows us to budget and plan for the future

421

donors that give on a recurring basis

Spoken 2020

220 people donated **\$299,603**

Income and Expenses

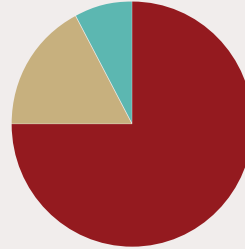
Amount Raised \$ 1,467,808

Amount Invested \$ 1,406,385



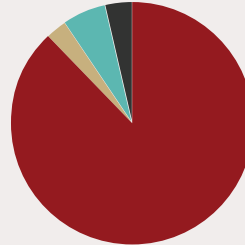
In 2015 the ECFA (Evangelical Council for Financial Accountability) announced the accreditation of Trash Mountain Project. Our continuing accreditation with the ECFA is just one more step in the process of following God's leading with the resources He has entrusted to this important mission.

Trash Mountain Project is subject to an independent audit every year and has again been approved with zero incident.



Allocation of Expenses

- 75% • Programs
- 17% • Management & General
- 8% • Development



808 Total Donors

- 711 Individuals
- 21 Corporations
- 49 Foundations
- 27 Churches

Direct Aid

Budget for 2021

Honduras	\$287,397
Dominican Republic	\$225,035
Philippines	\$181,763
Southeast Asia	\$36,176
Kenya	\$100,250
Total	\$830,621



ALL NUMBERS ARE FOR THE 2021 CALENDAR YEAR

What's Next?

All of our partners around the world demonstrated resilience and courage throughout 2021.

Each leader faced a number of challenges and rose to the occasion, and many of their programs experienced growth during such an unlikely time.

This year, we made the decision to take our Spoken event on location and filmed entirely at Kids With a Hope in Santiago, Dominican Republic. This Spoken and end of the year goal will allow us to keep growing the momentum as well as build a very much-needed nursery at Kids With a Hope.

***We need to raise
\$330,000 before
January 1st***

What that will cover

To reach our planned 2022 budget for all partner locations	\$225,000
Construction, materials and first year's operation budget for KWAH Nursery.	\$105,000

How you can help us accomplish this goal

Online Giving	trashmountain.com
Mail a Check	4110 NW 62nd St., Ste B, Topeka, KS 66618
Call Us	785-246-6845

Please contact us with any questions you may have.



4110 NW 62nd St. Ste B • Topeka, KS 66618 • 785-246-6845 • info@trashmountain.com

We are a 501(c)(3) non-profit organization. All contributions to Trash Mountain Project, Inc. are tax deductible under section 170 of the Internal Revenue Code. Trash Mountain Project, Inc. EIN# 26-4775012



**TRASH
MOUNTAIN
PROJECT**

live the command