



**TRASH MOUNTAIN PROJECT**

*2017 ANNUAL REPORT*

# TABLE OF CONTENTS

3	VALUES AND MISSION	17	EXPANDING THE MAP
4	WHAT IS A TRASH DUMP COMMUNITY?	18	TEAMWORK/PARTNERS
5	OUR STORY	19	REACHING SUSTAINABILITY
6	OUR PROGRESS	20	FINANCIALS
7	FROM THE FIELD	21	FISCAL YEAR OVERVIEW
9	OUR PROCESS	22	FINANCIAL ACCOUNTABILITY
10	A GLOBAL EPIDEMIC	23	FINANCIAL MODEL
12	DOMINICAN REPUBLIC	24	SOURCE AND DISTRIBUTION
13	HONDURAS	25	CONSOLIDATED STATEMENT
14	PHILIPPINES	26	KIDS SERVING KIDS
16	A WICKED PROBLEM	27	INCREASING VISIBILITY

WE CARE ABOUT **CHANGING LIVES** THROUGH OFFERING HOPE IN JESUS CHRIST.

WE ARE DEDICATED TO **INVESTING** IN **PEOPLE** LIVING IN TRASH DUMP COMMUNITIES WORLDWIDE.

WE ARE COMMITTED TO **LIVING THE** **COMMAND** TO DO JUSTICE, TO LOVE MERCY AND TO WALK IN HUMILITY.



# WHAT IS A TRASH DUMP COMMUNITY?

Landfills throughout the world are not the same as we see in the United States. Sure, the odor, the bacteria, the trash trucks, the vultures...they are all there, but something is different...people are living, working and dying in these trash dumps every day.

Over time, a colony forms with people that scavenge through the trash for recyclables to sell, which results in a meager income. This means the entire economy of such communities is centered on the very thing that is slowly chipping away at their human dignity.

# OUR STORY

In the fall of 2008, a team of individuals traveled to Tegucigalpa, Honduras, with the intention of producing a film about the despair found within the city trash dump. While interviewing families living among the garbage, God breathed unspoken passion into their hearts that forever altered and directed the path ahead of them. After significant time spent in prayer, Trash Mountain Project was founded with the mission to develop Christ-centered environments for children and families living in trash dump communities worldwide.

Trash Mountain Project aims to lead people into a growing relationship with Jesus Christ by addressing their spiritual, physical, emotional and educational needs. In the short time that TMP has existed, God has transformed our simple prayer into a dynamic team of individuals and churches sharing His love with the least, the lost and the forgotten people that we serve.

# OUR PROGRESS

SINCE 2009

DONATED: **MORE THAN \$8.2 MILLION**

OVERSEAS LEADERS SUPPORTED  
BY TMP: **44**

DUMP COMMUNITIES WITH  
TMP-SUPPORTED PROGRAMS: **9**

MEALS SERVED TO CHILDREN  
WORLDWIDE: **1.3 MILLION**

# FROM THE FIELD

Offering hopeful alternatives to people  
dependent on a mountain of trash



**OUR VISION OF COMPASSION DEMANDS THAT WE MOVE FROM RELIEF TO DEVELOPMENT AND FROM BEING PROVIDERS TO PARTNERS IN THE CAPACITY BUILDING OF LOCAL COMMUNITY LEADERS.**

## OUR PROCESS

### RESEARCH

Unfortunately, there is very little known and published about trash dump communities, so researching and increasing our knowledge on the issue is essential.

### RELATIONSHIPS

To develop long-term solutions, we must build relationships with local leaders within the communities with the ultimate goal of establishing a partnership.

### RELIEF

Urgent, and many times life-threatening, needs arise that must be addressed through short-term relief efforts.

### RESOURCES

Once the needs and plan are established, we share resources to provide solutions such as leadership mobilization, adequate nutrition, healthcare, education, livelihood projects and spiritual development initiatives.

### RESTORATION

We believe that faith, hope and love are the key ingredients to breaking the cycle of despair. To experience lasting change, there is simply no substitute for the slow-growing process of maturing spiritually.

# A GLOBAL EPIDEMIC

In the last eight years, TMP has observed that disease, injury, violence, and a general lack of hope are everyday problems in trash dump communities worldwide. Our current research indicates that waste colonies exist throughout the world except in highly developed nations. We are committed to the research and development of this subculture that is often unknown and frequently forgotten, as it is a global epidemic that has remained under the radar for far too long.

The work we do in each of our current locations varies because each community has different needs. Our commitment to God, our international partners and our supporters is to stay focused on the people in each of the communities until His mission through TMP is complete. As we visit new communities and conduct research, it is important to note that we will not expand our borders of commitment or scale beyond our capacity.

OVER

**500** DUMP COMMUNITIES  
CONFIRMED THROUGH  
TMP RESEARCH

OVER

**26,000** DUMP COMMUNITIES  
BELIEVED TO EXIST  
WORLDWIDE

**56** DUMP COMMUNITIES  
VISITED BY TMP STAFF

# KWAH, SANTIAGO, DOMINICAN REPUBLIC

INVOLVED SINCE 2010

Kids with a Hope is an after-school homework help center aimed at providing educational, nutritional and spiritual support for children living near the Rafey landfill.

## 2016 AT A GLANCE

**PROGRAMS:** Education, Nutrition, Discipleship, Healthcare, Aquaponics, Technical Training

- Kids in programs: 200
- Meals provided: 74,000
- TMP-supported leaders: 14
- Tech School Courses: 10



# AFE, TEGUCIGALPA, HONDURAS

INVOLVED SINCE 2009

Amor, Fe y Esperanza offers holistic care to children and families working in the trash dump outside of Tegucigalpa. AFE offers pre-K through high school education and college assistance for AFE graduates as well as remedial schooling for adults. They also have an on-site medical clinic and a nursery where mothers can safely leave their children while they work on the dump.

## 2016 AT A GLANCE

**PROGRAMS:** Education, Nutrition, Discipleship, Healthcare, Aquaponics

- Kids in programs: 150
- TMP-supported leaders: 2
- Infrastructure Projects Completed: School Bathrooms, Health Clinic Expansion, Nursery Expansion/Renovation, 3 Homes



# PHILIPPINES

INVOLVED SINCE 2012

TMP leaders have traveled to 28 trash dump communities throughout the island of Luzon and have developed strategic partnerships with leaders in multiple locations. We are working with local leaders to bring the hope of Christ to communities that have varying levels of need. As TMP prepares to scale in size to meet the demands of this global crisis, we have established NGO [non-governmental organization] status in the Philippines, and our Filipino partnerships are helping us learn and refine our missions approach.

## 2016 AT A GLANCE

**PROGRAMS:** Clean Water/Sanitation, Nutrition/Health, Discipleship, Education, Early Childhood Development, Livelihood

- Kids in programs: 600+
- Patients Seen in Health Clinic: 450+
- TMP-supported leaders: 20



SAN MATEO

PAYATAS

5 COMMUNITIES

1 VISION

SMOKEY MOUNTAIN

SANTIAGO ISABELA

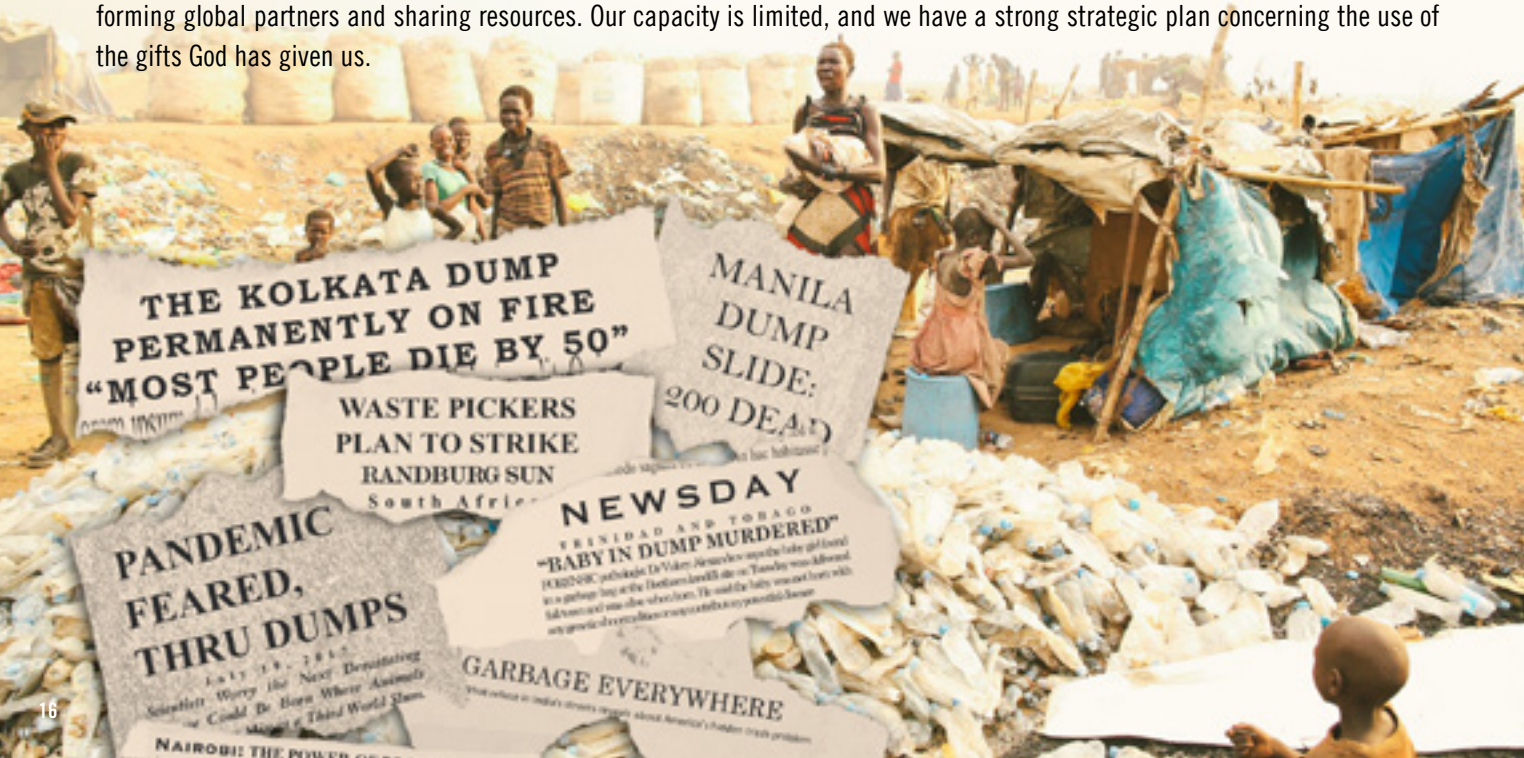
TANZA



# A WICKED PROBLEM

*A problem that is difficult or impossible to solve because of incomplete, contradictory and changing requirements that are often difficult to recognize.*

As TMP scales in size, it is important that we carefully assess the trash dump communities that are most in need of project partners. We are facing a widely misunderstood and wicked problem in the world, and as such, we are learning as we grow in understanding of what we are up against. It is important that we practice due diligence before making any commitments to expansion through forming global partners and sharing resources. Our capacity is limited, and we have a strong strategic plan concerning the use of the gifts God has given us.



## EXPANDING THE MAP

In 2017, TMP began reshaping programs to reach an even greater number of vulnerable families worldwide. We believe, to expand – this means adding more countries, more community development projects worldwide – we must go deeper with our current partners, strengthening the capacity of our field leaders in their respective countries.

### PHILIPPINES

Rick Aranas, the TMP Philippines Director, worked with TMP coaches to design a national plan map. He has been building a coalition of Filipino staff, educators, entrepreneurs, government officers, philanthropists, church leaders and development agencies who can together address the at-risk communities in ways that are most culturally relevant in their country.

### DOMINICAN REPUBLIC

Pablo Ureña and Elisabet Ramirez, the TMP field partners in the Dominican Republic, invited TMP team members to begin a capacity assessment of their program in 2017. TMP has begun discussions with them and their son, Eliezer, about their scouting for waste colony communities in other regions of the DR.

# TEAMWORK

Volunteers • Churches • Businesses • Organizations • Donors • Schools

Everything we do is made possible by our stateside partners, volunteers and supporters. Our partners are made up of churches, businesses, schools, organizations, families and individuals that have committed to join the vision God has given us on the mission field. Our volunteers put in hundreds of hours each year at home and abroad. Social entrepreneurs, such as Blue Jazz Java, have changed their entire business structure to include generous donations to TMP.

Just as our international church partners are uniquely qualified to understand and reach the communities in which we serve, local churches throughout the U.S. have the capacity and call to mobilize in world missions. Churches have invited TMP leaders to come and share the stories of God's movement in the trash dump communities, financially supported our missionaries and overseas projects, and have joined with TMP in sending teams with us to serve on the field. Local church partnership is essential to the mission of Trash Mountain Project. Our vision is to connect local ministry partners here with local ministry partners in trash dump communities around the world.



# REACHING SUSTAINABILITY

TMP will always remain committed to working with our international partners to meet the urgent needs of the people we have been called to serve, but what are the long-term solutions that will bring true sustainability to trash dump communities? We believe it starts with the self-sustainability of our ministry partners overseas. As we meet the urgent needs of the people, we are striving to develop a strong exit strategy that will empower the community, and allow us to move into new locations around the world.

We believe that a variety of livelihood projects will empower our partners to become self-sufficient by providing sustainable food production, economic opportunities, and evangelism through community outreach. On a larger scale, livelihood projects centered on entrepreneurship concepts in specific sectors such as agriculture, waste energy and recycling, as well as other micro-business opportunities will be a significant first step towards self-sustainability for our international ministry partners and community members.



# FINANCIALS



## 2016 FISCAL OVERVIEW

JUNE 1, 2016 – MAY 31, 2017

**\$1,357,643**

NUMBER OF  
DONATIONS: **5,417**

AVERAGE  
DONATION: **\$251**

# FINANCIAL ACCOUNTABILITY



## WISE STEWARDSHIP

At Trash Mountain Project, our ultimate goal is to glorify Jesus Christ in all that we do. To accomplish this, we must maintain the highest standard of God-honoring ethical practices throughout our organization. We believe that it is of the utmost importance to be wise with what God has entrusted to this ministry. We believe that 100% transparency before God, our donors and the general public is a biblical mandate (2 Cor. 4:1-2, 8:21; Titus 2:7-8; John 3:19-20). We do our best to develop diligent plans for all financial decisions and weigh every related decision with prayer and discernment.



### **ECFA Accredited**

In 2015 the ECFA (Evangelical Council for Financial Accountability) announced the accreditation of Trash Mountain Project. Our continuing accreditation with the ECFA is just one more step in the process of following God's leading with the resources He has entrusted to this important mission.



Trash Mountain Project is subject to an independent audit every year and has again been approved with zero incident.

# FINANCIAL MODEL

God has blessed Trash Mountain Project with thousands of people that have supported us financially since our inception. They can give with confidence knowing 100% of their money goes straight to the specific project they choose to support.

How do we “keep the lights on” without charging any administrative fees? We achieve this through Basecamp, which is a dedicated fund supported by individual donors, churches, businesses and foundations who take care of payroll and the majority of other general operational expenses. 100% also means that we are 100% debt-free. If we don't have it, we won't spend it.



# 355

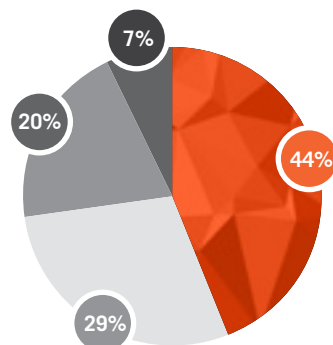
INDIVIDUALS • BUSINESSES  
CHURCHES • FOUNDATIONS

# 100%

PAYROLL EXPENSES PAID BY  
BASECAMP SUPPORTERS

## THE SOURCE

TMP giving has remained steady from the previous fiscal year, and we received several large donations from churches, individuals and corporations to help strengthen our infrastructure and fund some urgent projects in each of our field locations. Our financial stability and capacity continue to strengthen due to the generous gifts of our supporters.



**INDIVIDUALS**  
\$599,217

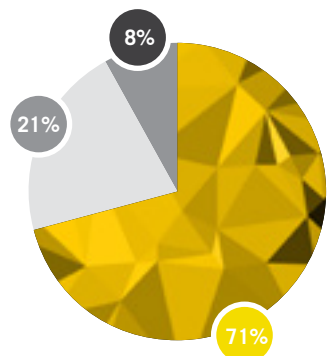
**CHURCHES**  
\$397,153

**FOUNDATIONS/  
ORGANIZATIONS**  
\$270,947

**CORPORATIONS**  
\$90,326

## THE DISTRIBUTION

In our eighth year, Trash Mountain Project continued building the necessary staff and infrastructure to thrive through the growing pains we have experienced from the beginning. Our staff and board are committed to the highest level of accountability and transparency. The chart to the right illustrates the general breakdown of how funding was used throughout the 2016 fiscal year based on our total expense of \$1,407,501.



**PROGRAM SERVICES**  
\$996,670

**MANAGEMENT/  
GENERAL**  
\$296,747

**DEVELOPMENT/  
FUNDRAISING**  
\$114,084

# CONSOLIDATED STATEMENT

	FISCAL YEAR 2016 <i>06/01/16 - 05/31/17</i>	FISCAL YEAR 2015 <i>06/01/15 - 05/31/16</i>
<b>INCOME</b>		
Ordinary Income		
Stock	15,014	-
Income	1,342,629	1,443,343
<b>Total</b>	<b>1,357,643</b>	<b>1,443,343</b>
Other Income		
Non Cash Contributions	9,683	3,927
Income from Merch Sales	3,275	3,977
Gain/Loss on Assets	(16)	(122)
Security Sale Proceeds	298	1,136
Interest Income, Dividends	211	223
<b>Total</b>	<b>13,451</b>	<b>9,141</b>
<b>EXPENSE</b>		
Ordinary Expense		
Development/Fundraising	114,084	99,151
Program Services	996,670	1,111,590
Management & General	296,747	232,959
<b>Total</b>	<b>1,407,501</b>	<b>1,443,700</b>
Other Expense		
COGS & Sales Tax Remitted	2,950	4,156
Basis in Securities Sold	-	-
<b>Total</b>	<b>2,950</b>	<b>4,156</b>
<b>ASSETS</b>		
Current Assets	216,864	252,087
Fixed Assets	25,171	23,362
<b>Total</b>	<b>242,034</b>	<b>275,449</b>
<b>LIABILITIES &amp; EQUITY</b>		
Current Liabilities	39,967	34,026
Total Equity	202,067	241,423
<b>Total</b>	<b>242,034</b>	<b>275,449</b>
<b>NET</b>		
Net Ordinary Income	(49,858)	(357)
Net Other Income	10,501	4,985
Net Income by Fiscal Year	(39,357)	4,628
<b>BALANCE FORWARD</b>	<b>241,423</b>	<b>236,795</b>
<b>BALANCE YEAR END</b>	<b>202,065</b>	<b>241,423</b>

The numbers provided for Fiscal Year 2016 will be audited Fall 2017



# KIDS SERVING KIDS



# INCREASING VISIBILITY

## NEWSLETTER

Sign up to receive our newsletter, mailed quarterly to subscribers nationwide. Learn about the latest successes and opportunities, then pass it along to others who would like to learn more about TMP.

## SOCIAL MEDIA



Follow us on Facebook, Twitter and Instagram and share TMP updates with your friends and family.

## GROUP STUDY CURRICULUM

Use the group curriculum we have designed with the TMP story to help start conversations about what it means to live on mission. For more information, contact us at [info@trashmountain.com](mailto:info@trashmountain.com).

## TMP MEDIA

Host a STAY documentary viewing or use other TMP media pieces to share the TMP story with others.

## WITNESS

Share Witness, a book that chronicles the compelling true story of TMP told from the eyewitness perspective of those who were present throughout the foundation of the organization.



TRASH  
MOUNTAIN  
PROJECT

live the command

1555 NW Gage Blvd., Topeka, KS 66618  
785-246-6845 • [info@trashmountain.com](mailto:info@trashmountain.com)

[TRASHMOUNTAIN.COM](http://TRASHMOUNTAIN.COM)

